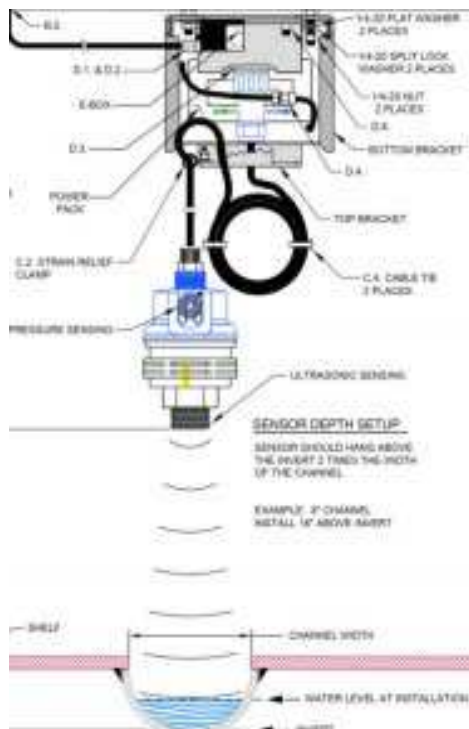
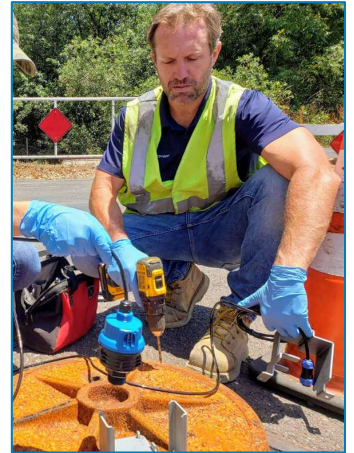
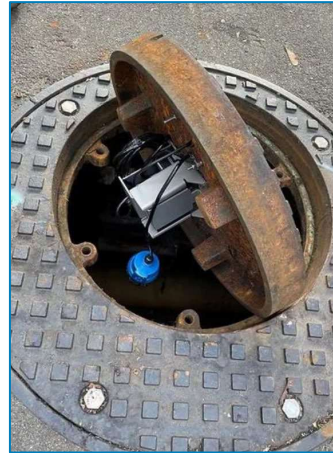


SubSonic® Dual Sensor

Provides Full Dynamic Range and System Visibility

The SubSonic® Dual Sensor is the standard sensor in the SmartCover suite of monitoring solutions. The sensor has full dynamic range of a manhole with visibility from the bottom of the channel to the cover.

The sensor is engineered to function in wet, humid, corrosive conditions and the patented design combines the accuracy of an ultrasonic sensor with the wide range of a pressure sensor. This combination allows measurement of valuable water level data beyond the point when the sensor becomes submerged, and is particularly helpful for non-sewer environments, such as: wet wells, holding tanks, and cable vaults.



SubSonic® Dual Sensor Features & Benefits

- Sealed, submersible sensor is virtually maintenance free
- Combined ultrasonic & pressure measurements gather accurate data readings during water surges and weather events
- Dropped closest to the invert allowing best range of visibility from bottom of the channel to cover
- Guaranteed accuracy on narrow inverts gives you system-wide visibility in difficult areas
- Helpful for non-sewer environments (wet wells, holding tanks, cable vaults, open)

“Within the first three hours of installation, we had one SmartCover sensor tell us there was a blockage on the way, and we were able to go out and clear the blockage before we had a problem.”

*-Water Utilities Department
City of Arlington, TX*



Surcharge Event



Normal Operation



Pressure Sensor Mode
Ultrasonic Sensor Mode



About SmartCover:

SmartCover© Systems offers cost-effective satellite manhole monitoring solutions to eliminate sewer overflows, optimize collection system cleaning, minimize odorous H₂S gas, and accurately identify inflow and infiltration (I&I). Our comprehensive dashboard with alarms and notifications allows you to efficiently manage real-time data to enhance performance, reduce costs, and optimize resources.

SmartCover Differentiators:



No confined space entry reduces field resources and safety hazards



Satellite communication delivers constant system visibility



Data management and turnkey analytics improve decision making



Alarms and notifications provide advanced notice to prepare and respond



Mobile app produces system insights wherever and whenever



Available API fully integrates multiple systems



Entry detection at every site provides instant notification of access



Industry leading uptime ensures reliable system access