

Subsonic[®] Dual Sensor

Full Dynamic Range



"Within the first three hours of installation, we had one SmartCover tell us there was a blockage on the way, and we were able to go out & clear the blockage before we had a problem."

-- Water Utilities Department, City of Arlington, TX

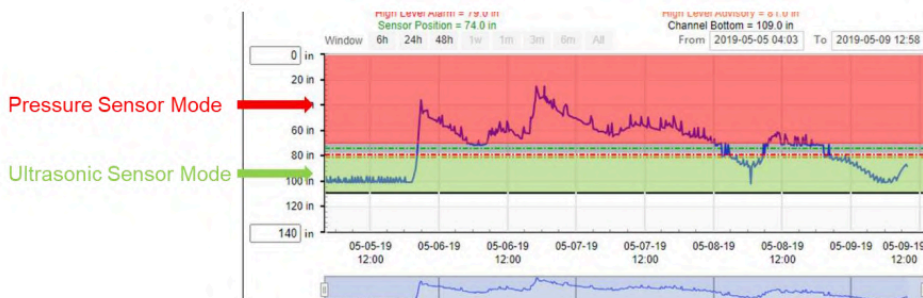
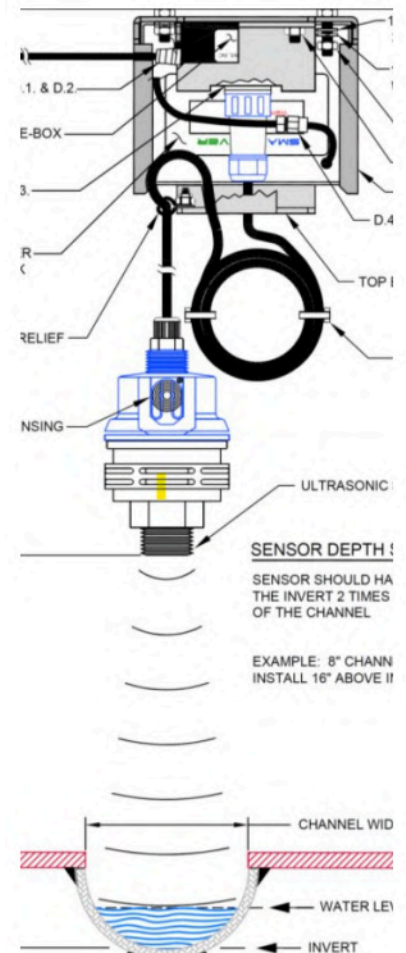
HOW IT WORKS

The SubSonic Dual Sensor is the standard sensor in the SmartCover suite of wastewater monitoring solutions. The sensor has full dynamic range of a manhole with visibility from the bottom of the channel to the cover.

The sensor is engineered to function in wet, humid, corrosive conditions & the patented design combines the accuracy of an ultrasonic sensor with the wide range of a pressure sensor. The combination allows measurement of valuable water level data beyond the point when the sensor becomes submerged.

When a SubSonic sensor is used with a SmartCover system, you don't have to worry about losing the signal during a rain event or a surcharge.

- No data loss during a surcharge
- Consistent reliable readings
- Mobilizing crews only when needed
- Full manhole height & depth measurement
- Sensor closeness to the invert detects very small changes



855.291.1980

sales@smartcoversystems.com

LI: SmartCover Systems

www.smartcoversystems.com



Subsonic[®] Dual Sensor

Full Dynamic Range

BENEFITS

- Sealed, submersible sensor is virtually maintenance free
- Combines ultrasonic & pressure measurements
- Drops closest to the invert
- Accurate readings during water surges
- Visibility from bottom of the channel to cover
- Accuracy on narrow inverts
- Particularly helpful for non-sewer environments: wet wells, holding tanks, cable vaults, open

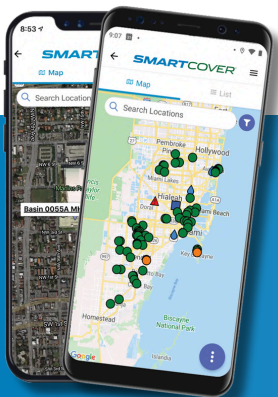
SPECIFICATIONS

- Ultrasonic transducer operating range: 0 - 79"
- Ultrasonic transducer resolution: 1/10"
- Submersion level maximum depth 34.5' at sea level
- Submersion level sensing resolution: 1/2"
- Submersion level sensor is a sealed pressure transducer

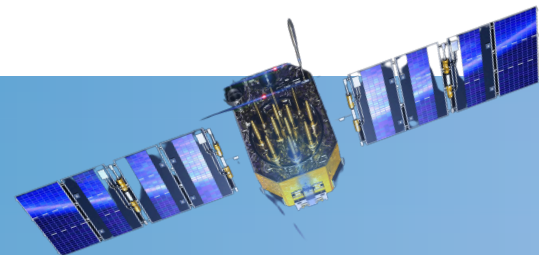


SMARTCOVER FEATURES

- Hardware components engineered to function in wet, humid, corrosive conditions
- Flexible patented sensor designs & deployment
- NO CONFINED SPACE ENTRY* installation or service
- Reduces traffic management resources
- Secure, online dashboard with easy-to-read, visual reports
- Compact, long lasting battery
- Two-way communications permits remote settings management
- Fusion with rain, river & tide data
- Variable timing options for data scan & notifications
- Done-for-you analytics
- Works when there is no power
- Satellite coverage works with sites difficult to access & withstands cellular outages
- Built in tilt switch for real time entry detection
- Encrypted secure servers with redundancy
- Mobile app for iOS & Android
- API available
- Configurations for open channels, canals, holding tanks, lift stations, outfalls, wet wells, reservoirs & utility vaults



With the SmartCover mobile app, get the insights you want, when & where you need them. Available for both iOS & Android devices.



With satellite based data transmission, your sewer status connection is maintained even during cell outages & the most severe weather.